

BizFlow Process AnalyzerTM

Turning *What If?* into *What Is...*

Why Simulate a Process?

- Optimize cycle time and costs
- Identify and remove process inefficiencies
- Analyze participant utilization rate
- Estimate process execution times
- Identify bottlenecks
- Evaluate the impact of process modification

Process Analyzer Features & Benefits

- One-click export/load into high-performance simulation engine
- Analyze, optimize, and deploy models without redundant effort
- Point-and-click setup for business conditions and simulation environment
- Response times in seconds or minutes, not hours or days
- Support for multiple trial runs; runs can be saved, exported, printed, shared
- Easy-to-use, yet highly sophisticated features are available for advanced users
- Customized reports share analysis details without data overload (full data reports are available, if needed)

BizFlow provides a complete platform for collaborative business process management that allows you to improve process efficiency across your extended enterprise. One of the ways that BizFlow can help you improve efficiency and reduce risk is with BizFlow Process AnalyzerTM.

Go one step beyond the here and now to create “What if?” scenarios, and analyze your processes safely under real-life conditions before deployment. Adjust parameters such as inputs, deadlines, constraints, resources, and other variables. Set the desired performance target and Process Analyzer’s simulator suggests ideal parameters to achieve it. Illustrate the process, test it with the click of a button, and deploy it with confidence across your enterprise — all within an intuitive, user-friendly environment.

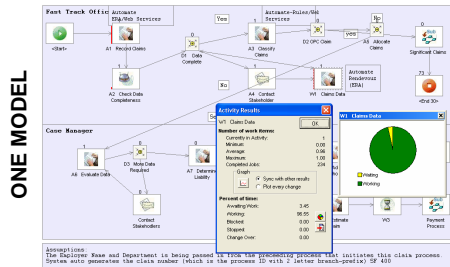
BizFlow Process Analyzer lets you create dynamic business process models (simulating real-life, real-time processes) and instantly refine them to reflect changing business requirements. Analyze performance, cost, cycle times, resource utilization, and other metrics under simulated conditions before actually deploying a process.

Process Analyzer is an integrated feature of BizFlow Process Designer, allowing you to model and analyze processes without redundant efforts. Process Analyzer’s GUI-based interface is easy to use, yet even skilled analytical professionals will find that Process Analyzer’s advanced features provide sophisticated, in-depth process analysis.

BizFlow Process Analyzer

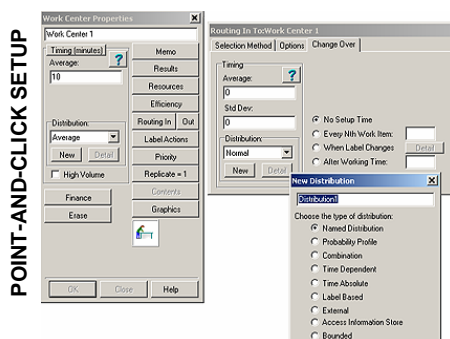
A Tool for Today with Real Benefits Tomorrow

Process Analyzer enables you to forecast outcomes, estimate resource requirements, and make other business decisions without risk based on real-world conditions. By modeling your business processes in a virtual environment, analysts can make adjustments to inputs, deadlines, constraints, resources, and other parameters.



ONE MODEL

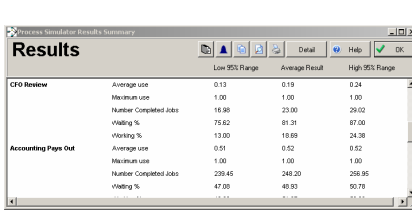
Model, analyze, optimize, and deploy without redundant efforts.



POINT-AND-CLICK SETUP

Process Analyzer provides an easy-to-use, point-and-click setup of your business conditions and simulation environment. Quickly set and modify simulation properties to obtain commonly requested results.

ONE-CLICK RESULTS

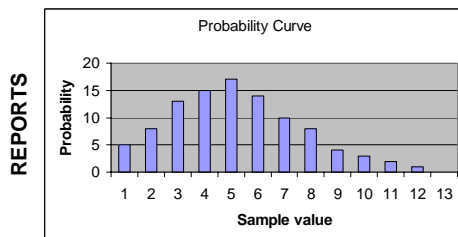


The screenshot shows a 'Results Summary' window with a table of performance metrics for two categories: 'CFO Review' and 'Accounting Pays Out'.

		Low 95% Range	Average Result	High 95% Range
CFO Review	Average use	0.13	0.19	0.24
	Maximum use	1.00	1.00	1.00
	Number Completed Jobs	15.85	23.00	29.02
	Waiting %	75.62	81.31	87.00
Accounting Pays Out	Average use	0.51	0.52	0.52
	Maximum use	1.00	1.00	1.00
	Number Completed Jobs	229.45	245.20	259.95
	Waiting %	47.00	49.93	50.78

ONE-CLICK RESULTS

Display results with a single click at end-of-trial. Show averages and confidence intervals, refining results further with another click.



REPORTS

Generate customized reports easily and share the important details of your analysis without overwhelming people with data overload...yet full data reports are available, if needed.

Contact **HandySoft Global** today to find out how BizFlow and BizFlow Process Analyzer can help you improve process efficiency and reduce risk across the enterprise.